

QUICKSTART GUIDE

Please be advised this tool ships with minimal, non-vehicle specific software.
To download software to use on the vehicles you service, the tool must be registered first.
Please follow the following steps:

Contents

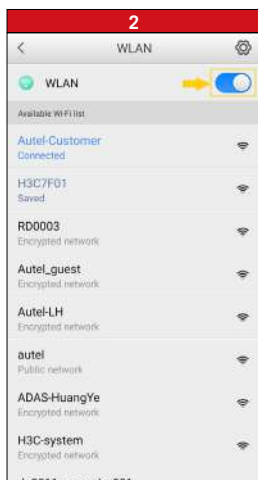
| | |
|---|---|
| 1. Register Tool | 1 |
| 1.1 Registration Via Tool | 2 |
| 1.2 Registration Via a Windows-based PC | 3 |
| 2. Download Software | 4 |
| 3. Download BAS Firmware | 5 |
| 4. Pair VCI to Tablet | 5 |
| 4.1 Pair Tablet with VCI Via Bluetooth | 5 |
| 4.2 Check for VCI Firmware | 6 |
| 5. Print via Windows PC to Wi-Fi Printer | 7 |

QUICKSTART GUIDE

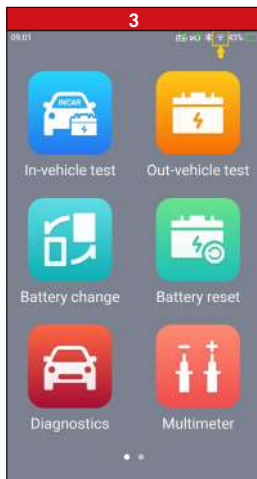
1. REGISTER TOOL



- Power on the BT608. Swipe down from the top of the screen and a drop-down menu will display.
- Long press the WLAN icon to enter the WLAN setting menu.



- Swipe the WLAN toggle to turn on the Wi-Fi.
- Select your network and enter password to sign in.

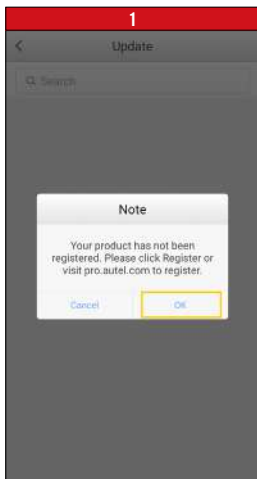


- The Wi-Fi icon will display at the top right corner of the screen when connection is established.

QUICKSTART GUIDE

1. REGISTER TOOL

1.1 REGISTRATION VIA TABLET



- After the device is connected to Wi-Fi, access **Update**
- A dialog box will display asking you to register your tool.
- Tap **OK**.



- A sign-in screen will display
- Create an Autel ID using an accessible email address



- Enter your email address, password and tap **Verification code**
- Check your email for the verification code, enter the verification code, and tap **Sign up**

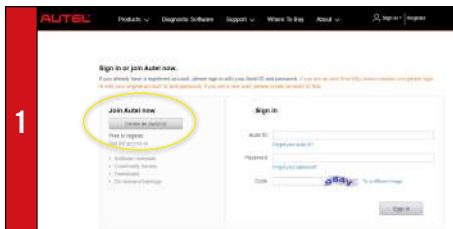


- The serial number and password fields will be automatically completed.
- Tap **REGISTER**

QUICKSTART GUIDE

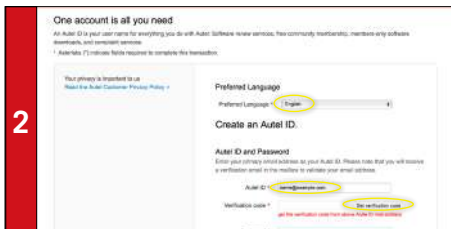
1. REGISTER TOOL

1.2 REGISTRATION VIA A WINDOWS-BASED PC



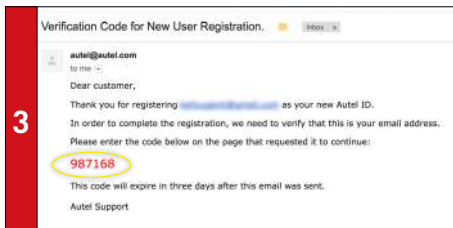
1

- Using a computer, launch an Internet browser and go to <http://pro.autel.com>
- Click **Create Autel ID** on the left side of the screen
- If you already have an Autel ID, sign in and skip to Step 6



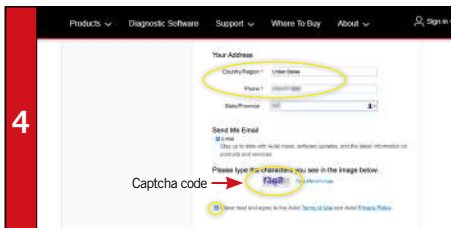
2

- Set preferred language
- Enter your email address as Autel ID
- Click **Get Verification Code**



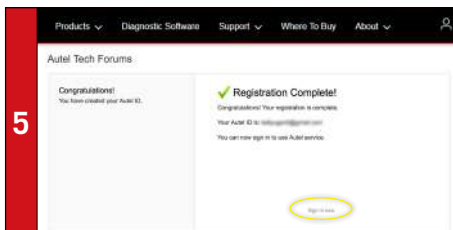
3

- An email titled "Verification Code for New User Registration" will be sent to you.
- Open email and copy the 6-digit verification code
- Return to <http://pro.autel.com> to continue registration



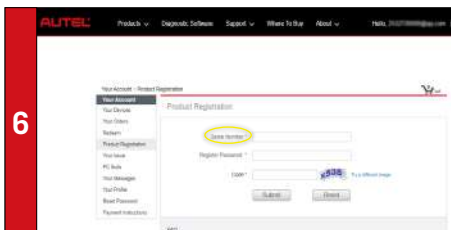
4

- Enter verification code and all other required information marked with a red asterisk
- Enter Captcha code as shown
- Read the Autel **Terms of Use** and **Privacy Policy** and select the check box



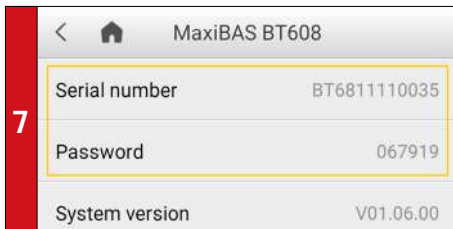
5

- Click **Create Autel ID** at the bottom of the screen
- *Registration Complete screen will display.*
- Click **Sign in Now** and log in



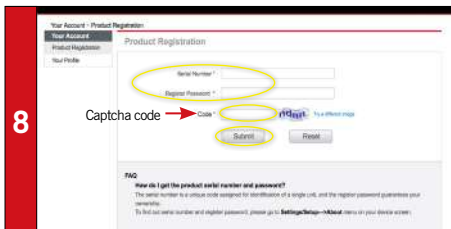
6

- Select Product Registration from the menu list
- *Product Registration screen will display.*



7

- To locate the tool's serial number and password: from the Main Menu select the **Setting** icon and tap **About**

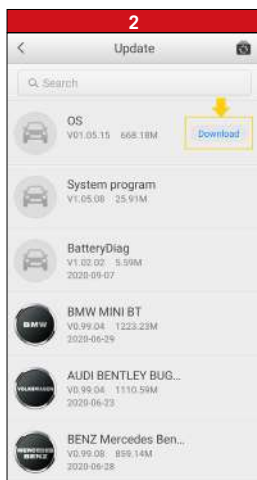


8

- Input your tool's Product Serial Number and Password
- Type Captcha code as shown
- Click **Submit** to complete tablet registration

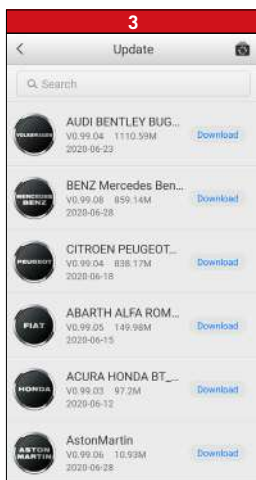
QUICKSTART GUIDE

2. DOWNLOAD SOFTWARE



- If updates are available, the number of available updates will display above the green Update button
- Select the **Update** button to view a list of available updates.

- Download the system update by selecting the **Download** button on the right.



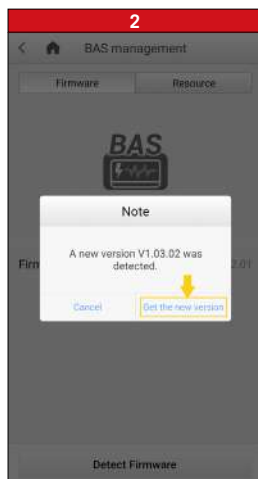
- Download update for each vehicle manufacturer you service

QUICKSTART GUIDE

3. DOWNLOAD BAS FIRMWARE



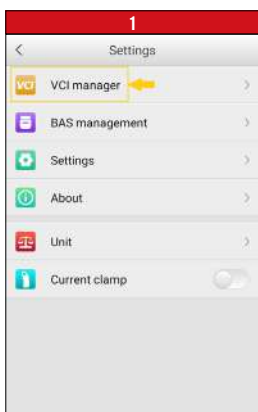
- Select **Settings** from the main screen and tap **BAS management**
- On the **Firmware** tab page, select **Detect Firmware**.



- A dialog box will display when new firmware version is available.
- Select **Get the new version** to download the new BAS firmware.

4. PAIR VCI TO TABLET

4.1 PAIR TABLET WITH VCI VIA BLUETOOTH



- Connect the VCI to a vehicle or USB power source
- Select **Settings** from the main screen and tap **VCI manager**.



- Your tool will automatically start scanning for available VCI devices. Found devices are listed on the bottom of the screen.
- Press your VCI device serial number to pair the tablet with VCI.



- A green bluetooth icon will display when the tool and VCI are paired.

4. PAIR VCI TO TABLET

4.2 CHECK FOR VCI FIRMWARE



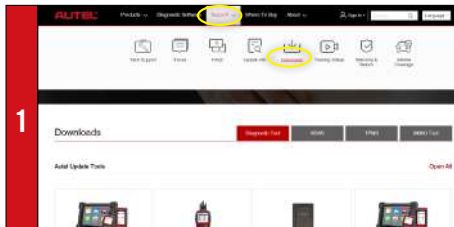
- Connect the VCI to a vehicle and turn ignition on.
- Select **Settings** from the main screen and tap **VCI manager**
- On the **Firmware upgrade** tab page, select **Detect Firmware**

- A dialog box will display when new firmware version is available.
- Select **Get the new version** to download the new VCI firmware.

QUICKSTART GUIDE

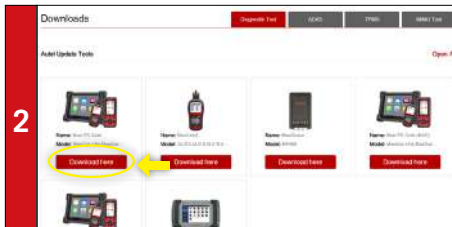
5. PRINT VIA WINDOWS PC TO WI-FI PRINTER

Works with any printer with a Wi-Fi connection. No need for special software or driver on the tablet.



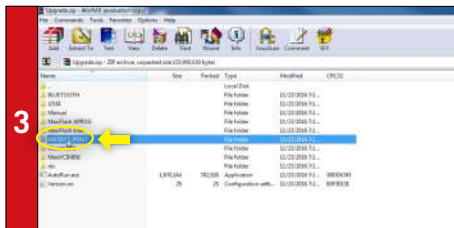
1

- Make sure your Window PC and tablet are on the same Wi-Fi network
- On your computer, go to Autel.com, select **Support > Downloads > Autel Update Tools**



2

- Locate the **MaxiSYS PC Suite** software and click on the **Download Here** button
- Open the zip file



3

- Select **MaxiSYS Print**, then click the setup.exe file to install the program



4

- Within the program dialogue box, check **Auto Print** to automatically use the default printer
- Select **Quick Print** to use the default printer or select **Print** to choose a printer